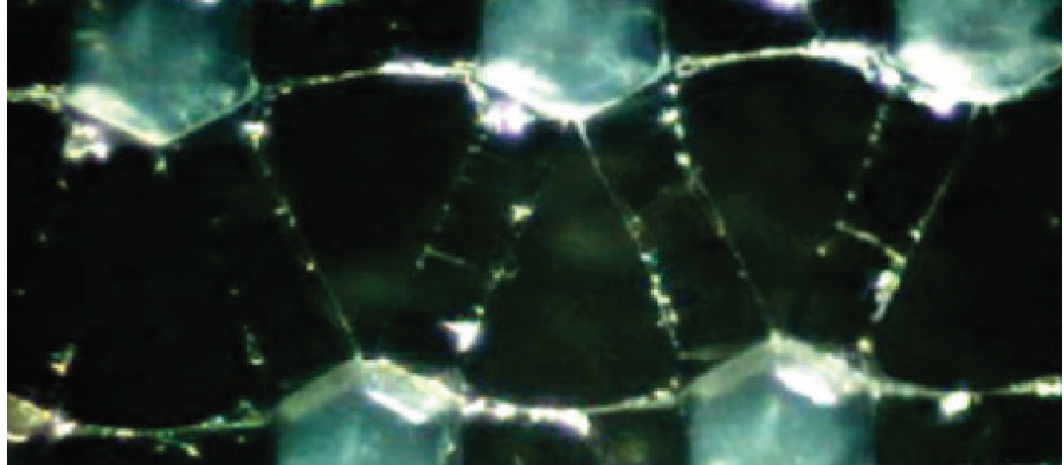


CM18 NATURAL



General Description

18 gsm polyethylene net with a thin lower melting bonding layer
Processing: Co-extruded nets are designed for use in heat lamination processes

Applications:

- Woundcare dressings requiring a laminated pad with low adherence characteristics
- First aid dressings
- General lamination

Property	Typical Value
Thickness (micron)	135
Film weight (g/m ²)	18
Boss count (MD) (per 25.4mm)	23
Boss count (TD) (per 25.4mm)	24
Tensile strength MD (gf/cm)	500
Tensile strength TD (gf/cm)	500
Nominal length (1m)	1500
Maximum width (mm)	1900
Minimum width (mm)	50
Minimum length (1m)	1000