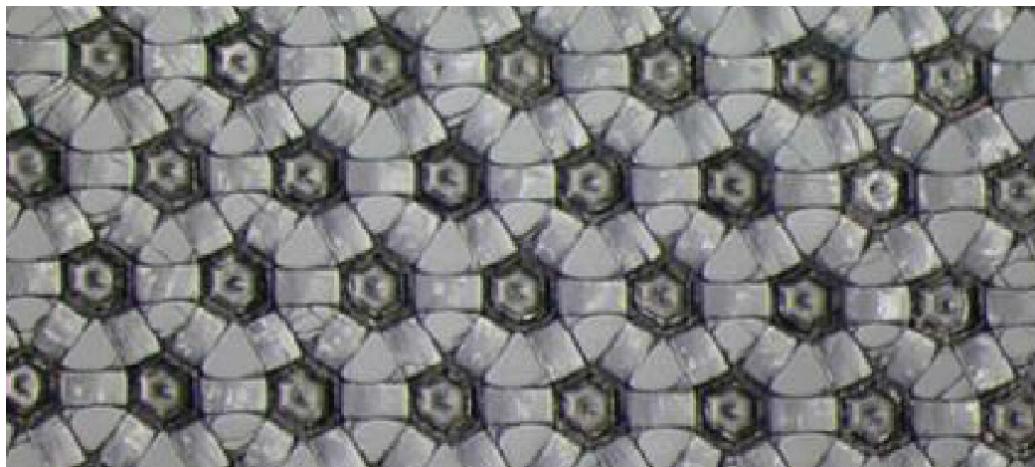


CB32



General Description

A polyethylene (HDPE) net with a thin low melting point ionomer bonding layer. This allows the coextruded net to bond directly to a substrate whilst maintaining the net structure.

Property	Typical Value
Thickness (micron)	127
Film weight (g/m ²)	32
Boss count (MD) (per 25.4mm)	30
Boss count (TD) (per 25.4mm)	36
Tensile strength MD (gf/cm)	1050
Tensile strength TD (gf/cm)	800
Nominal length (1m)	1000
Maximum width (mm)	1060
Minimum width (mm)	50
Minimum length (1m)	500