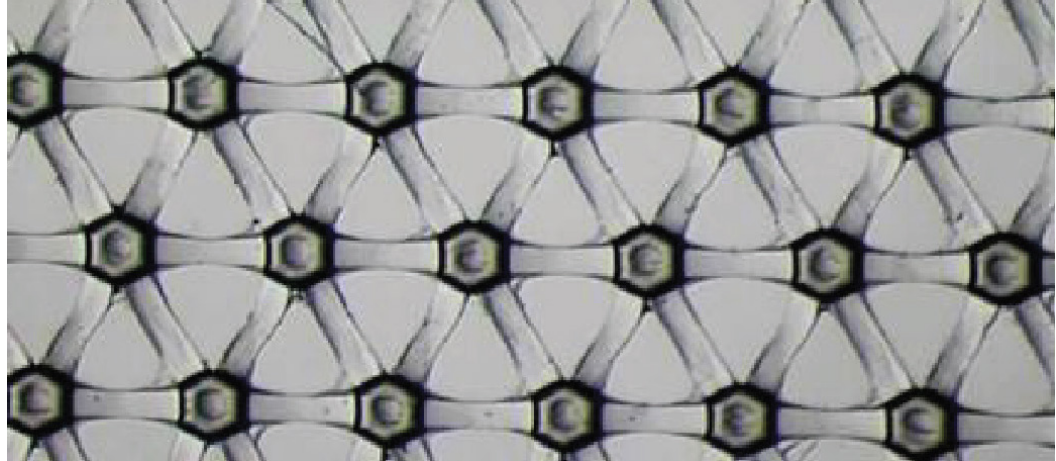


## CB15 NATURAL



### General Description

A polyethylene (HDPE) net with a thin low melting point ionomer bonding layer. This allows the coextruded net to bond directly to a substrate whilst maintaining the net structure.

Property	Typical Value
Thickness (micron)	114
Film weight (g/m <sup>2</sup> )	15
Boss count (MD) (per 25.4mm)	23
Boss count (TD) (per 25.4mm)	24
Tensile strength MD (gf/cm)	500
Tensile strength TD (gf/cm)	700
Nominal length (1m)	1500
Maximum width (mm)	1900
Minimum width (mm)	50
Minimum length (1m)	500